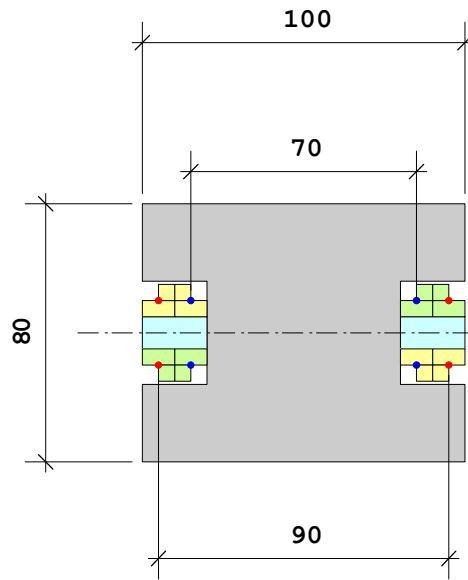


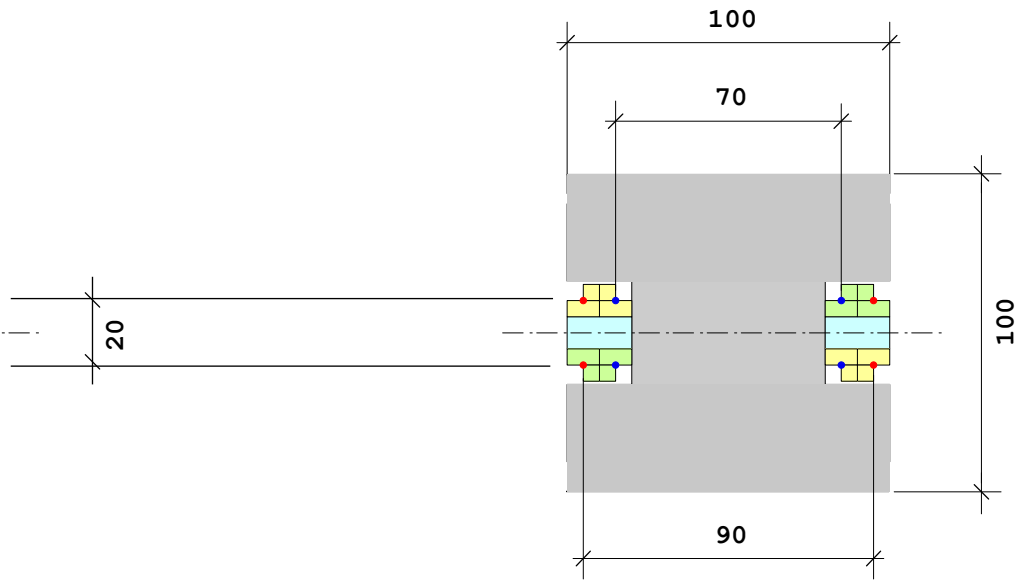
Intermediate Mass

For NM / EM mirrors
 $\phi 100$ mm
t60 mm



Top View

For BS mirror
 $\phi 150$ mm
t40 mm



Top View

NM / EM mirrors

BS mirror

Diameter

10 cm

150 mm

Thickness

6 cm

40 mm

Test Masses

Material

Fused Silica SiO₂

2.2 g/cm³

Volume

471 cm³

707 cm³

Weight

1037 g

1555 g

Volume

408 cm³
= 8 x 10 x 6
- 3 x 4 x 6

528 cm³
= 10 x 10 x 6
- 3 x 4 x 6

**Intermediate
Masses**

Material

Aluminum Al5052

2.68 g/cm³

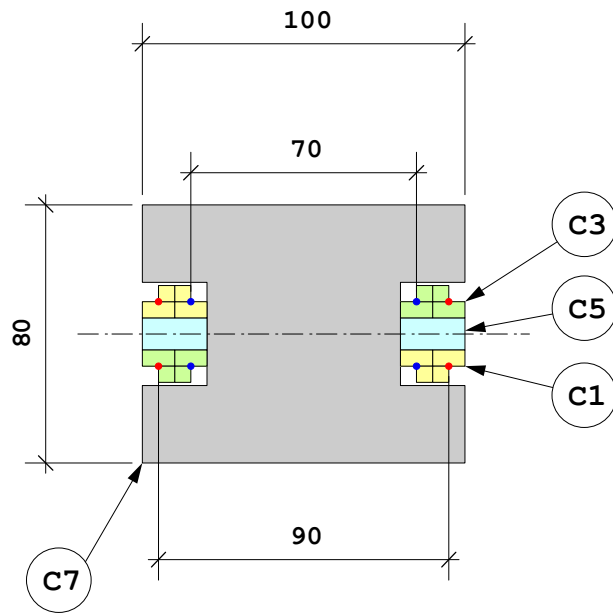
Weight

1093 g

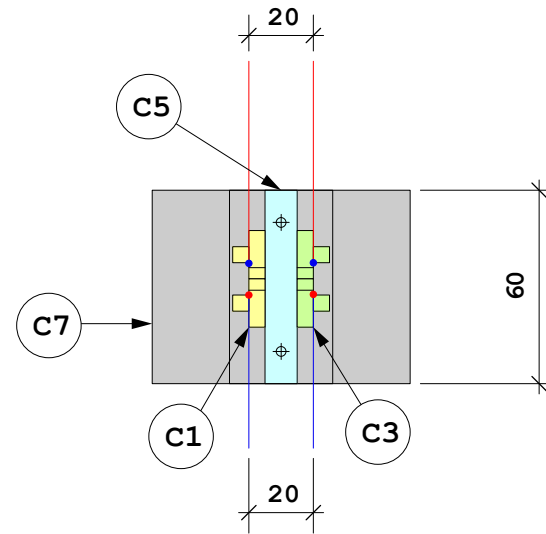
1425 g

C-series

Intermediate Mass of TAMA W-pendulum (for $\phi 100$ mm x t60 mm)



Top View



Side View

The following clamp parts are common for NM, EM and BS intermediate masses.

C-series

Intermediate Mass of TAMA W pendulum

Clamp Assembly

