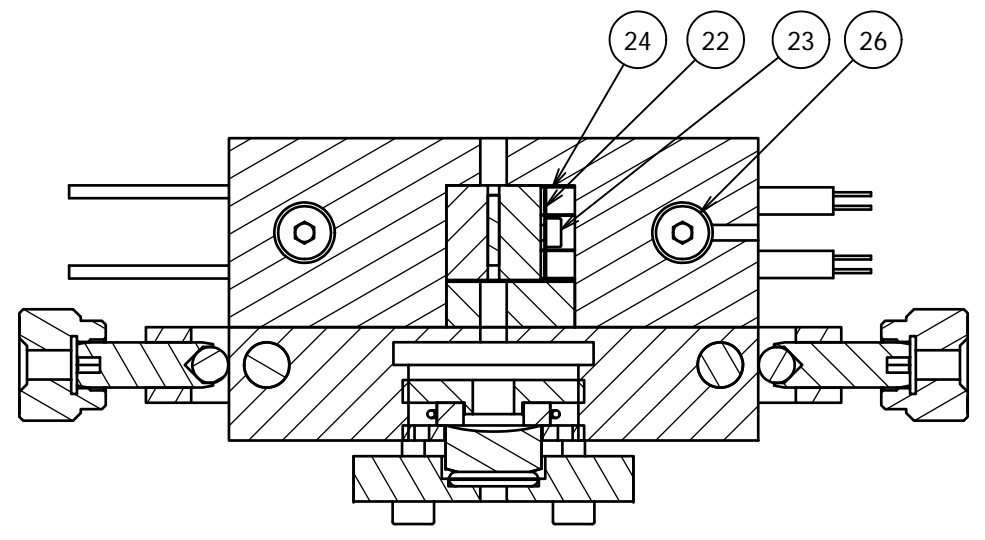
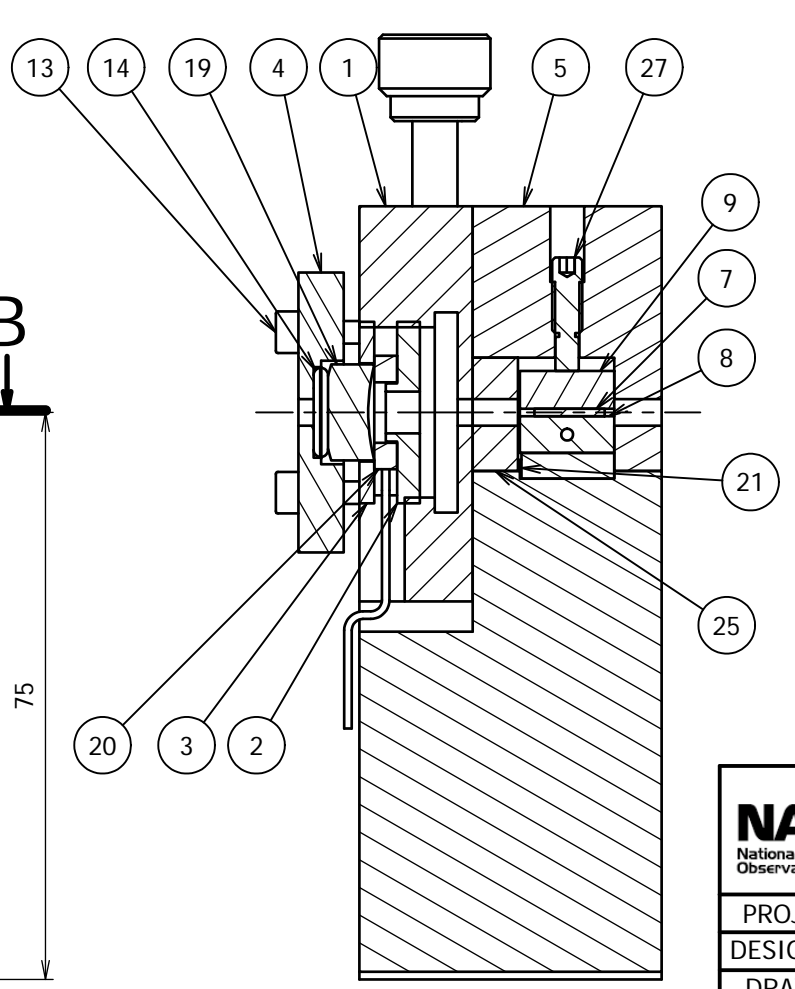


| REV | LOC | REVISION | DATE | APPD BY |
|-----|-----|----------|------------|------------|
| A | ALL | RELEASED | 2017/09/08 | R.Flamínio |
| B | | | | |
| C | | | | |
| D | | | | |

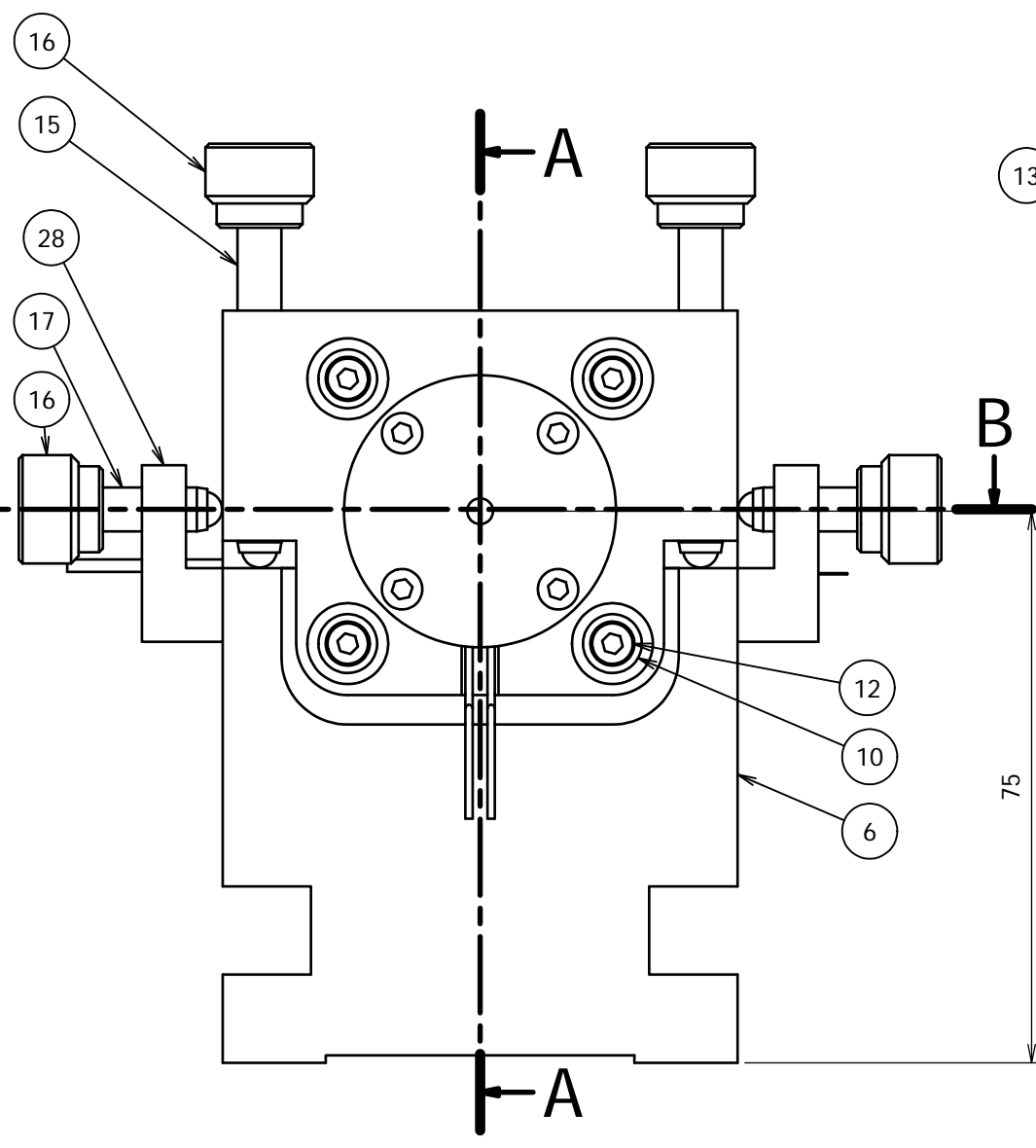
B-B (1:1)



A-A (1:1)



| PARTS LIST | | | |
|------------|-----|------------------------------------|--------------------------|
| P.N. | QTY | parts name | parts N. or sheet N. |
| 1 | 1 | PD_PIEZO_HOLDER_V2 | ME-GW-1704009-A-DWG |
| 2 | 1 | M24_DISK_INTERNO_V2 | ME-GW-1704010-A-DWG |
| 3 | 1 | M24_DISK_ESTERNO_V2 | ME-GW-1704011-A-DWG |
| 4 | 1 | COVER_PLATE_V2 | ME-GW-1704012-A-DWG |
| 5 | 1 | PD_POM_BRIDGE_V2 | ME-GW-1704013-A-DWG |
| 6 | 1 | PD_BASE_SHG_V2 | ME-GW-1704014-A-DWG |
| 7 | 1 | Crystal | |
| 8 | 1 | PD_LOWER_COPPER_L_V2 | ME-GW-1704015-A-DWG |
| 9 | 1 | PD_UPPER_MACOR_L_V2 | ME-GW-1704016-A-DWG |
| 10 | 4 | Washer | MISUMI.co.jp PACK-SPWFN3 |
| 11 | 16 | Disk Spring Washers | MISUMI.co.jp MDS3-1 |
| 12 | 4 | Cylinder Head Cap Screw | JIS B 1176 - M3 x 10 |
| 13 | 4 | Cylinder Head Cap Screw | JIS B 1176 - M3 x 12 |
| 14 | 1 | O-rings | JIS B 2401 - Class 1A P8 |
| 15 | 2 | Micro adjuster screw | Thorlabs, Inc. F6MSS50 |
| 16 | 4 | Adjuster knob | Thorlabs, Inc. F6MSSK1 |
| 17 | 2 | Micro adjuster screw | Thorlabs, Inc. F6MSS20 |
| 18 | 2 | Cylinder Head Cap Screw | JIS B 1176 - M4 x 12 |
| 19 | 1 | Coupling mirror | |
| 20 | 1 | Piezo | HPCh_150_15-8_3 |
| 21 | 1 | Peltier | KELK.co.jp KSMH047 |
| 22 | 1 | Temp sensor retainer | ME-GW-1704017-A-DWG |
| 23 | 1 | Cylinder Head Cap Screw | JIS B 1176 - M2 x 4 |
| 24 | 2 | Temp. sensor | SEMITEC 103JT-050 |
| 25 | 1 | Crystal holder retainer | ME-GW-1704018-A-DWG |
| 26 | 2 | Hexagon Socket Low Head Cap Screws | CBSST4-12 |
| 27 | 2 | POM tipped set screw | SPUS4-10b |
| 28 | 2 | Adjuster bracket | ME-GW-1704019-A-DWG |



| | | |
|---|-------------------------------------|-----------------------------|
| NATIONAL ASTRONOMICAL OBSERVATORY OF JAPAN | UNLESS OTHERWISE STATED: | |
| | ALL DIMENSION ARE MILLIMETERS (MM) | TOLERANCES |
| | MACHINIG FINISH Ra25 | JIS B 0419-mK (ISO 2768-mK) |
| | EDGE BREAK 0.2 x 45° | |
| PROJECT : GW | DATE : 2017/04/18 | MATERIAL : N/A |
| DESIGNED : Y.OBUCHI | DATE : 2017/04/19 | FINISH : AS MACHINED |
| DRAWN : s.saitou | DATE : 2017/04/25 | SCALE : 1/1 SHEET : 1/1 |
| CHECKED : Y.OBUCHI | DATE : 2017/09/08 | SHEET SIZE : A3 REV : A |
| APPROVED : R.Flamínio | | |
| THIRD ANGLE PROJECTION | TITLE assieme pd OPO v3 asm | |
| | DWG. NO. ME-GW-1709002-A-DWG | |